

CA-ZOOM™ PTZ-4.2

With Unitized Pan & Tilt

The Future of Vessel Inspections Has Arrived

The CaZoom™ PTZ-4.2 is Everest VIT's improved design for a unitized Pan-Tilt-Zoom camera. It is the ideal inspection camera for tanks, vessels, underwater applications and large areas. The PTZ-4.2 uses a remote pendant which features a 2-inch diagonal color LCD monitor for easy viewing, and a sensitive variable speed joystick for positioning. It is designed to be easier to use in confined and elevated areas, and provides advanced electronic camera and control features. It has proven to be an invaluable tool for inspection, maintenance and NDT professionals in reducing downtime, improving safety, and achieving superior inspection results.

Applications

- Manless entry for viewing in confined space
- Tank & vessel
- Underwater
- Steam headers
- Sumps and manifolds
- Snubber and hanger
- Large diameter piping

Features/Benefits

- Powerful 72:1 zoom provides magnified and detailed images for viewing
- Unitized (no external wiring) for industrial use
- Turbo lighting for extra viewing light
- Auto focus for quick and easy viewing
- Control of gain, iris, electronic shutter benefit
- Lightweight and easy to handle for field portability
- Low lux CCD for quality video in low-light environments
- Inspect hazardous and confined spaces
- Purgeable for reliability
- Safe low-voltage DC operation
- Remote pendant at 15', 50' and 100' for ease of use
- Dockable pendant for easy access to camera & lighting functions
- Micro-processor controlled for easy upgrades and advanced features
- Vital Signs Feature displays camera's temperature, pressure, humidity, pan & tilt position on-screen with optional data display package



Damaged packing tray



Damaged Diffuser

Vanadium Repair Plug
in a Glass-lined Vessel

Tower Tray Inspection

Everest VIT
INC.
CREATING WHAT'S NEXT IN REMOTE IMAGING.

www.everestvit.com

Service, Rental, Sales locations

Colorado
719•535•9400

Illinois
630•238•1100

Kentucky
502•423•7871

New Jersey
973•448•0077

North Carolina
704•391•2805

Texas
281•447•6770

Edmonton
780•430•9060

Toll Free
888•332•EVIT

Specifications

Lighting

- 2 each 35W lamps w/ focused dichroic reflectors
 - 35W flood: 1500cp @ 30 deg (half angle) beam spread*
 - 35W wide spot: 3000cp @ 20 deg (half angle) beam spread*
 - 35W spot: 8500cp @ 10 deg (half angle) beam spread*
- Turbo lamp mode: 90 watts

* (Measured at 50% maximum intensity)

Camera

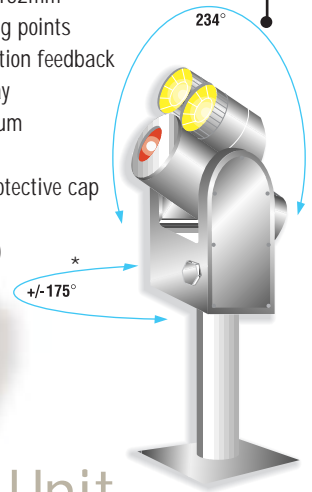
- Type: Color 1/4" Super HAD CCD
- Resolution: 450 H. TV Lines
- Zoom: 18:1 optical X 4:1 digital = 72:1
- Focus: automatic & manual with macro capability
- Iris: automatic (f1.4 - close) & manual
- Frame Integration/Electronic Shutter: automatic & manual (1/4 " to 1/10,000 sec.)
- Sensitivity: 3lux at f1.4
- Construction: Clear anodized aluminum
- Environment: Submersible to 100' (30m) at 15psi
- Temperature: 0° to 120° F

Pan & Tilt

	Pan	Tilt
Range	+/-175°*	234° total
Speed	0-7.8"/sec	0-7.8"/sec
Torque	8 in. lb. max.	8 in. lb. max.
Clutch	Yes	Yes
Weight	6.3 lbs. (2.8 kg) with camera and lights	
Size	10.4" x 4.8" x 6.0" (H x W x L) (Fits through a 5.5" hole) 264mm x 122mm x 152mm	
Mounting	Four 1/4" - 20 mounting points	
Feedback	10k potentiometer position feedback w/optional data display	
Construction	Clear-anodized aluminum All internal wiring	
Pressurization	Schrader valve with protective cap 15 psi internal	

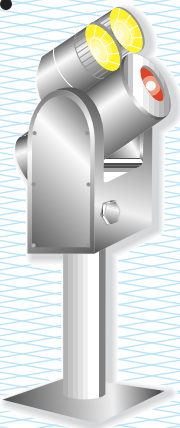
Available in Stainless steel @ 13lbs. (6kg)

* 360° continuous pan option is available



Operating Environment

Temperature	0° F to 120° F (-18°C to 66°C)
Pressure	Waterproof to 150 feet (45 m) or 75 PSI external; 15 PSI internal
Radiation	Cumulative lifetime dose is 18k to 22k Rads for CCD/Optics
Operating Limits	<ul style="list-style-type: none"> • With no shielding - from 100 rads/hr (slight noise) to 1000 rads/hr (no picture) • With 4 feet of water shielding - from 10⁶ rads/hr (slight noise) to 10⁷ rads/hr (no picture) (for each additional foot of water, rads/hr increases by 10 times) • Seal change required when total accumulated dose exceeds 10⁶ rads or after the 4th module burnout



Camera Control Unit

- Dockable pendant with 2" color LCD monitor (15', 50', 100')
- Lamp intensity control, turbo function control
- Variable-speed pan & tilt joystick with home feature
- Iris, gain, electronic shutter, focus, zoom controls, ShadowBrite
- Built in microphone with line level audio output
- VCR control from pendant (optional)
- Super-video (Y-C) and composite (EIA - 170A) (NTSC or PAL) video output
- Size: 14" (355mm) x 9" (229mm) x 7" (178mm) (L x W x H)
- Weight: 15 lbs. (6.8kg) with pendant



Cable

.33" (8.25mm) diameter, 100 feet (30M) standard length, up to 600 feet (180M) available Polyurethane jacket w/500 lb. (230kg) Kevlar® strength member
Cable weight: 7 lbs. per 100 feet (3kg per 30M)
Waterproof impulse connectors

Accessories

- LazrDot measurement system
- Interconnecting/telescoping poles
- Extended cable lengths from 50' to 600'
- PT-01 head mounted display
- Hazardous environment rating
- 360° continuous pan option
- Keyboard text generator / data display
- Slip-ring cable drum
- S-VHS VCR
- S-Video monitor
- Swivel ball tripod
- Camera head stand
- Foam mount portable case



Tel: 973-448-0077 Fax: 973-448-0044
199 Highway 206, Flanders, NJ 07836
www.everestvit.com