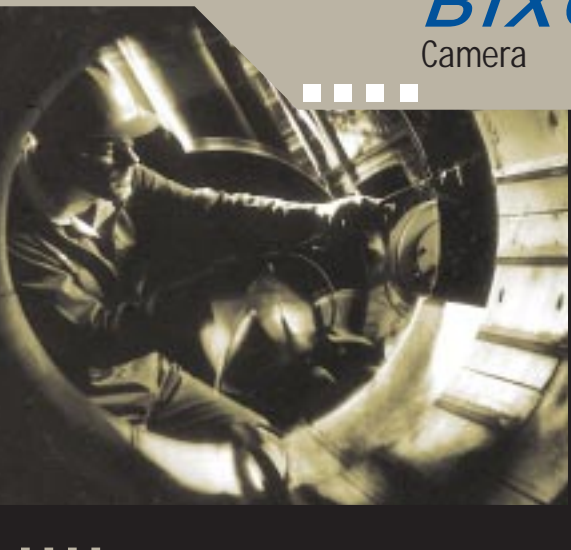


BTX QUICKLOOK™

Camera



The fast, portable solution for remote visual inspections.

As its name suggests, the BTX-QuickLook™ is the ideal solution when you need to take a quick look inside 1.25" to 22" diameter piping. This revolutionary color video inspection system provides detailed images at distances up to 164 feet. It is powered by a rechargeable battery, making it easy to use while eliminating the need for power cables, extension cords and power sources. The lightweight BTX-QL is designed to go wherever you need to go, without being a burden. It is the most portable system you will find on the market today.

Inspection Applications

- Boiler tubes, downcomers and steam lines
- Municipal and Industrial sewer lines
- High humidity/underwater applications
- Electrical conduits
- Process lines
- "FDA" welds

Features/Benefits

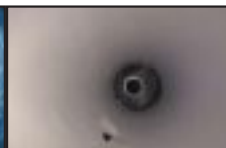
- Turbo light function for extra illumination
- Rechargeable (2 hour) battery for portability and ease of use
- 4" LCD color monitor for easy/portable viewing (optional)
- Adjustable focus for use in various applications
- Enclosed lighting guards against damage, thermal shock and dirt
- Integrated CCU/Slip-ring cable reel for added portability
- 1.14" diameter head enables inspection from 1.25" to 22" diameter piping
- 1.375" Head length enables easy inspection of bends
- Lightweight for ease of transport
- Color/sensitive CCD camera for detailed images in larger pipes
- 90° mirrors for side viewing



www.everestvit.com



Boiler Tube - Pitting



Electrical Conduit-Defect



Process Line -
Coke Deposits



Drain Line - Corrosion

Service, Rental, Sales locations

Colorado
719-535-9400

Illinois
630-238-1100

Kentucky
502-423-7871

New Jersey
973-448-0077

North Carolina
704-391-2805

Texas
281-447-6770

Western Canada
780-430-9060

Toll Free
888-332-EVIT

Specifications

Size/Weight

- 12" (300mm)W x 12" (300mm)L x 14" (355mm)H
- 98 foot (30 m) system - 22lbs. (10kg)
- 164 foot (50 m) system - 26lbs. (12kg)
- Shipping Case: 21" (533mm) x 19" (483mm) x 14" (356mm)

Operating Environment

- Temperature: 0° F to 120° F (-18°C to 49°C)
 Pressure: Waterproof to full length of cable
 44 PSI for 98' (30m) system
 73 PSI for 164' (50m) system



Camera

- Type: 1/3" Hyper HAD CCD, 250,000 pixels
 Resolution: 330 HTV lines
 Size: 1.14" (29mm) dia. x 1.2" (30mm) long
 Construction: Stainless steel
 Lens Options: f1.9 x 4mm lens
 f3.3 x 4mm lens
 f7 x 4mm lens
 Manual Focus: Adjustable 1/2" - ∞
 Electronic Shutter: Automatic (1/60 - 1/2000 sec.)
 Gain: Automatic to +16 db
 White Balance: Automatic (1,200 - 8,000°K)

Accessories

- 4" (102mm) LCD color monitor mounted on reel
- 90° viewing attachment
- Fiberglass push rods
- Video monitors
- Motorized 90° mirror for weld inspection
- 4-6" (102mm-152mm) centering device
- 8-12" (203mm-305mm) centering device
- Digital image storage devices
- Additional lenses
- Delrin FDA 90° mirror

Monitor Options

- 4" (102mm) LCD color monitor (as shown)
- Sony digital tape recorder with 5.5" LCD monitor
- Sony digital frame grabber with 2.5" LCD monitor
- PT-01 heads-up video display

Cable/Power/Output

- 0.3" (7.5mm) diameter, polyurethane jacket with 500lb. Kevlar® strength member
- Hardwired, Multi-conductor cable
- Stainless Steel Push Pole adapter
- Available in 98' (30M) or 164' (50M)
- AC/DC Operation: 100-240v
50/60 Hz or 12 vdc
- Rechargeable Battery:
YUASA NP4-12 12V 4.0Ah
- Available in NTSC or PAL video formats
- Rigid cable available 100' only

Lights

- 7 incandescent lamps, 5 watts total,
750 ft-cd @ 2" (8K lux @ 5cm), 150 hour lamp life
- Turbo mode, 9 watts total, 1400 ft-cd @ 2" (15K lux @ 5cm)



Tel: 973-448-0077 Fax: 973-448-0044
 199 Highway 206, Flanders, NJ 07836
www.everestvit.com