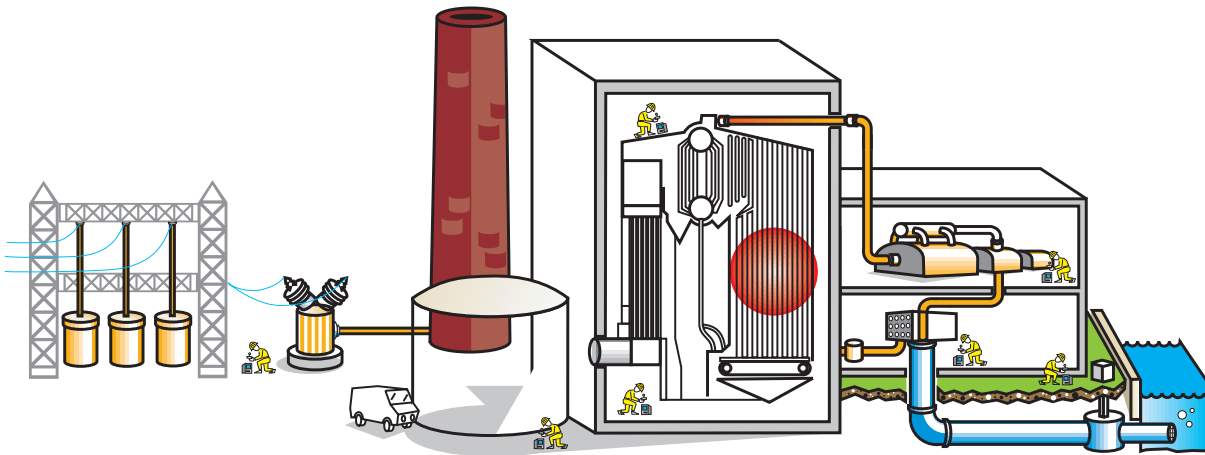
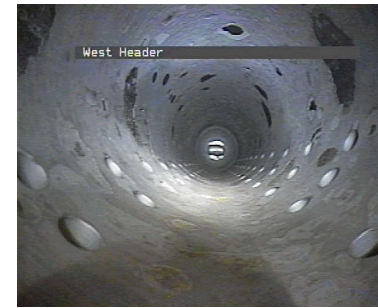


Visual Testing Applications



- | | |
|---|-------------------------------------|
| 1. Stack, chimney/flue and precipitator | 9. Boiler feed pump & piping |
| 2. Storage Tanks & Vessels | 10. Condensers |
| 3. Furnace Fans & Duct dampers | 11. Turbines |
| 4. Headers/steam drums | 12. Extraction lines & steam chests |
| 5. Mud drums/headers | 13. Generators & windings |
| 6. Attemperators | 14. Cooling water system |
| 7. Boiler tubes | 15. Transformers & switchgear |
| 8. Underground piping | |



Header



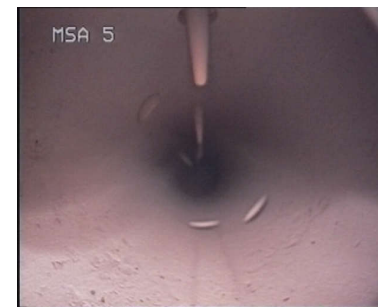
Ligament Crack



Steam Turbine Seal Rub



Turbine Blade Mineral Deposits



Main Steam Line



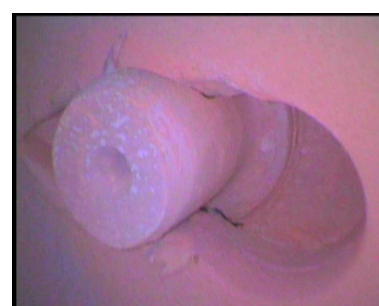
CMV Weld Crack



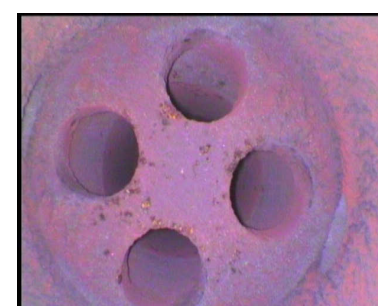
Stack Lining



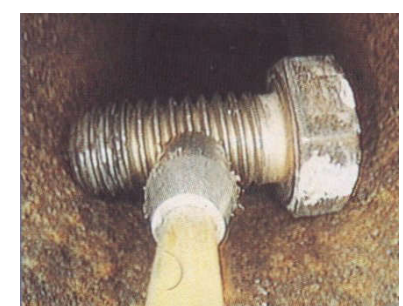
DeMin Tank Rust



De-Superheater Lug



De-Superheater Spray Nozzle



Debris Retrieval